

DRAWING NO.
CV24300AWX

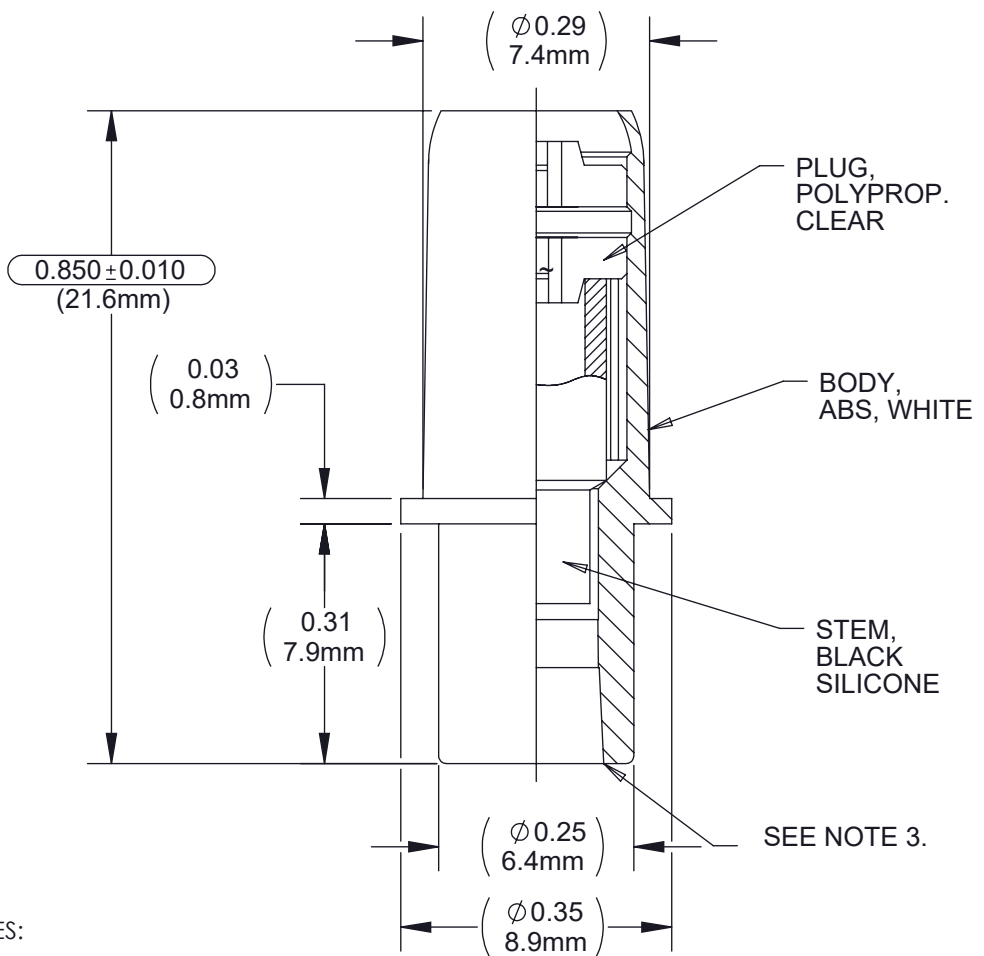
REV
B



Customer Drawing

Revision History

REV	DESCRIPTION (ECO)	DATE	APPROVED
A	DRW. REPLACES CV24300AX, CV24300AWBM, CV24300AWT ECN 3965	3/18/09	AK
B	UPDATE ABS BODY TO LUSTRAN 348 ECO 13174	01/15/26	JS



NOTES:

SUFFIX AND TEST OPTIONS:

- NO SUFFIX: TEST REQ. 1 PSI WITH 0.1 ccpm MAX LEAK RATE.
- BM: TEST REQ. 1 PSI WITH .0025 ccpm MAX LEAK RATE.
- T: TEST REQ. BACK PRESSURE 1 PSI WITH .0025 ccpm, MAX LEAK RATE. PRESSURE DECAY TEST-10 PSI WITH 1.3, PSI MAX LEAK RATE.

1. CRITICAL DIMENSIONS ARE CIRCLED AND SUBJECT TO INSPECTION. DIMENSIONS IN PARANTHESES ARE FOR REFERENCE ONLY.
2. ALL DIMENSIONS ARE IN INCHES WITH THE NOMINAL DIMENSIONS IN MILLIMETERS BELOW.
3. LUER COMPATIBLE WITH ISO594-2.

QUALITY CRITERIA:

O.D. FLASH 0.015 MAX. (0.4MM)
GATE VESTIGE 0.01 MAX. (0.3MM)
EMBEDDED PARTICLES, BUBBLES, SPOTS, STAINS: 0.3mm ² MAX. NO MORE THAN 3 PER PART.

MOLDED PARTS:
GATES, PARTING LINES, AND FLASH PER QUALITY CRITERIA
PROPRIETARY AND CONFIDENTIAL
THE INFORMATION CONTAINED IN THIS DRAWING IS THE SOLE PROPERTY OF HALKEY-ROBERTS CORPORATION ST. PETERSBURG, FL. ANY REPRODUCTION IN PART OR AS A WHOLE WITHOUT THE WRITTEN PERMISSION OF HALKEY-ROBERTS CORPORATION IS PROHIBITED.

DRAWN BY	M.S.	DATE	-
APPROVED BY	J.W.	DATE	01-31-01
MATERIAL	AS NOTED		
FINISH	UNLESS OTHERWISE SPECIFIED: DIMENSIONS ARE IN INCHES TOLERANCES: ANGULAR: ± 1° TWO PLACE DECIMAL ± .01 THREE PLACE DECIMAL ± .005		
THIRD ANGLE PROJECTION			

Halkey-Roberts

TITLE
CATHETER VALVE ASSY.

SIZE
A

SCALE
4:1

DRAWING NO.
CV24300AWX

DO NOT SCALE DRAWING

REV
B

SHEET
1 OF 2

DRAWING NO.
CV24300AWX

REV
B



Customer Drawing

Revision History

REV	DESCRIPTION (ECO)	DATE	APPROVED
-	SEE SHEET ONE	-	-
-	-	-	-

BILL OF MATERIAL

PLUG	BODY	STEM
H0500HN POLYPROPYLENE CLEAR	LUSTRAN 348 WHITE	CLS2600HR BLACK SILICONE

DRAWN BY	M.S.	DATE	-		Halkey-Roberts
APPROVED BY	J.W.	DATE	01-31-01		
MATERIAL				TITLE	CATHETER VALVE ASSY.
FINISH				SIZE	DRAWING NO.
UNLESS OTHERWISE SPECIFIED:	THIRD ANGLE PROJECTION			A	CV24300AWX
<small>DIMENSIONS ARE IN INCHES TOLERANCES: ANGULAR: ± 1° TWO PLACE DECIMAL ± .01 THREE PLACE DECIMAL ± .005</small>			SCALE	4:1	REV
<small>THE INFORMATION CONTAINED IN THIS DRAWING IS THE SOLE PROPERTY OF HALKEY-ROBERTS CORPORATION ST. PETERSBURG, FL. ANY REPRODUCTION IN PART OR AS A WHOLE WITHOUT THE WRITTEN PERMISSION OF HALKEY-ROBERTS CORPORATION IS PROHIBITED.</small>			DO NOT SCALE DRAWING		B
<small>MOLDED PARTS: GATES, PARTING LINES, AND FLASH PER QUALITY CRITERIA</small>					SHEET
<small>PROPRIETARY AND CONFIDENTIAL</small>					2 OF 2